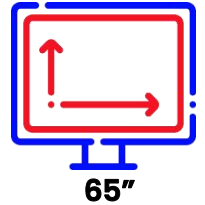




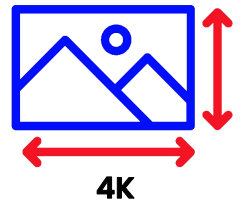
M1-7 - No Camera 65" 4K TOUCH INTERACTIVE SMART

Key Features

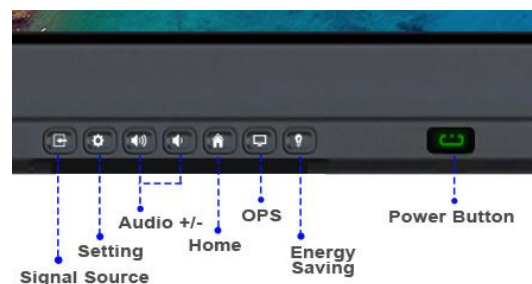
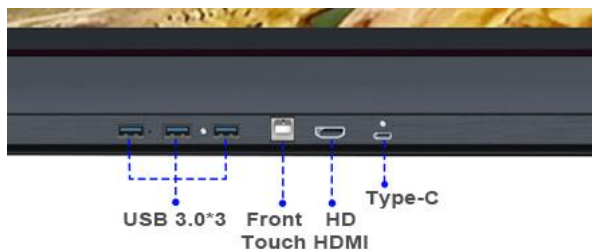
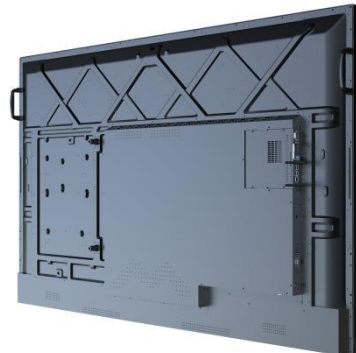
- **Stunning Visuals:** 4K Ultra HD (3840x2160p) display with 4mm physical tempered anti-riot glassto strengthen the visual effect and enhance the touch experience
- **All-in-one design:** The system integrates various features of different machines, including a built-in screen projection, electronic whiteboard, annotation, split screens, etc
- **Beautiful Layout:** The device has an aluminum alloy outer frame that is surface sandblasted and anodized. It also has an iron shell back cover and active heat dissipation.
- **Smooth Touching:** The device uses high-speed 20-point infrared touch technology, which provides a better writing experience, smoothness, and faster writing speed
- **BE HEARD:** The device has built-in 8 arrays microphones with echo cancellation and noise reduction technology, allowing for effective communication.
- **Dual System support:** The device has an international standard OPS slot, which allows for easy upgrading and maintenance.
- **Rich Expansion:** The device has abundant front expansion, which allows for convenient connectivity of all your devices.
- **PEACE OF MIND:** The device comes with an industry-leading 1-year standard warranty, with 24-hour professional after-sales services and technical team support.



65"



4K



Product Description

The MI series interactive smart board is an innovative tool for modern classrooms. With its all-in-one design, 4K Ultra HD display, and smooth touch technology, it engages students and enhances the learning experience. Teachers can explain concepts, annotate diagrams, and share educational videos, making learning more immersive and interactive. Built-in microphones with noise reduction technology also allow for effective communication in large classrooms. The device's international standard OPS slot allows for easy maintenance, and its front expansion enables convenient connectivity with all devices.

The MI series interactive smart board is an essential tool for modern education, offering a range of features that improve student engagement and academic outcomes.

Product Specifications

Basic Parameter

Screen Size	65 inch
Display Area	1428.2*803.18
Physical (mm)	1486*901*88.9
Packaging (mm)	1600*205*1001.5
Net Weight (kg)	37.2
Gross Weight (kg)	46

LCD Panel

Panel Brand	BOE brand new gauge A screen (LG、CSOT、AUO Optional)
Panel Technology	Zero-fit
Panel Type	TFT-LCD S-PVA
Screen Ratio	16: 9
Brightness	240-280cd/m ² (Center Points)
Ratio Contrast	1200:1
Visual Angle	178°/178°
Respond Time	8ms
Color Gamut (NTSC)	72%
Backlight	DLED direct down type
Life	>60000H
The Speaker	2×8 Ω /8W(built in)
Resolution	3840 × 2160 (UHD) @60hz, 4K UHD screen

Infrared Touch Characteristic

Touch Type	Infrared Touch frame
Touch Point	20 Touch Points
Glass	4mm tempered glass
Touch Strength	Zero pressure touch
Respond Time	<8ms

Induction Life	6 million times
The Interface Definition	USB 2.0(Full speed)
The Light Resistance	It has light resistance
Positional Accuracy	More than 90% of the touch area is 2mm
Number of Infrared Induction Lines (W x D)	32767 × 32767
The Power Supply Model	Full duplex usb-powered DC +5V up to 500mA
Glass Transmittance	> 88% (higher transmittance depends on glass surface treatment technology such as AR/AG)

Motherboard / Android System

Model	CVTE-T982
Processor	T982-N0DN
Input Port	RJ45 IN, RJ45 OUT, PC AUDIO, LINE OUT, OPTICAL OUT, RS232, USB 2.0, HDMI *2, TOUCH OUT, USB 3.0*2
Audio	480i, 480p, 720p, 1080i, 1080p, 2160P
System Version	Android 7.0/ 8.0/ 9.0 version (Android 10 11 Optional)
RAM	3G RAM (1G/ 2G /4G /8G Optional)
ROM	32G ROM (8G / 16G/ 32G/ 64G Optional)

Switching Power Supply

Power Consumption (Typical Value)	AC100-240V~(+/-10%),50/60Hz
Stand By Power Consumption	≤ 0.5W
The Power Interface	≤ 330W
Switching Power Supply	European standard 220V two - phase three - wire system

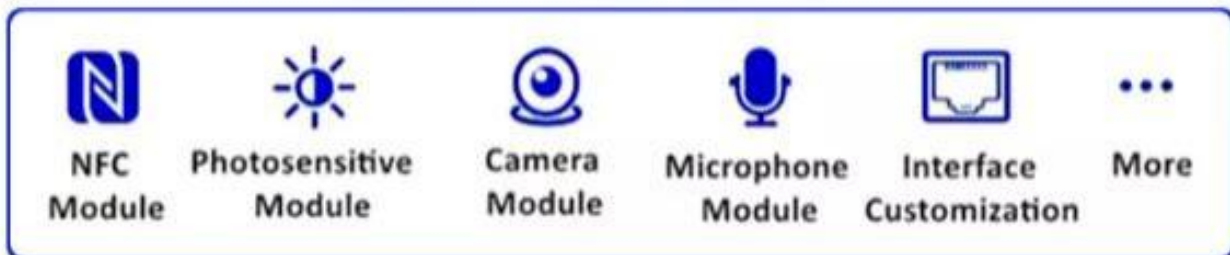
The environment

Working Temperature	0℃~50℃
Storage Temperature	-20℃~60℃
Working Humidity	20%~80%(No condensation)
Store Humidity	10%~90%(No condensation)
Display Mode	S-ips, often black display, transmission
Maximum Service Time	24 hours

OPS (Dual System)

System Version	Android 7/8/10/11 and other version for option
Processor	Intel core i3/i5/i7 option
Graphic Board	Core HD Graphics 3000
Main Frequency	2.4GHz
Memory	Memory 4G/8G/16G option
Hard disc	128G/256G/512G/1T option

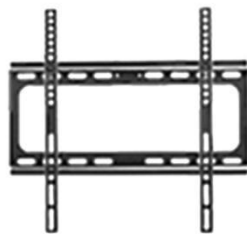
Product Customization



Optional Content



AC Power Cord



Wall Bracket



Mobile Stand



PC Moduel (Dual System)

Package Content



Interactive Board



Instruction



Magnetic Touch Pen



Remote Controller



EPE/UPS



Crown Box



Wooden Box



Contact **Sales**

Devin He

Phone: +86 18928337820

Whatsapp: +86 18928337820

Email: Devin@giiking.com

Latest News: Giiking.shop

Official Website: Giiking.com

Alibaba: Giiking.alibaba