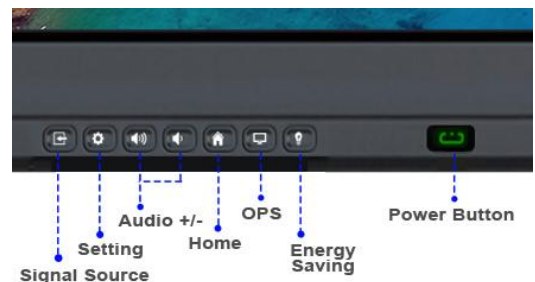
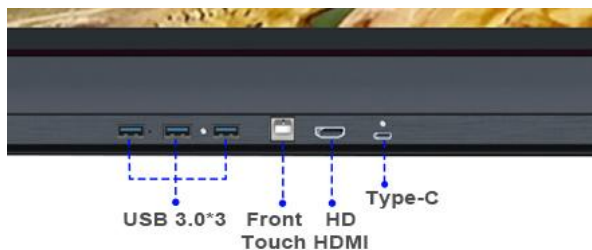
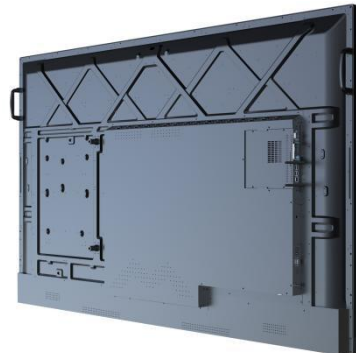
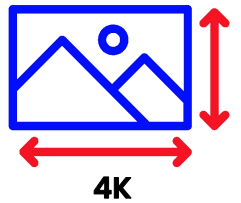
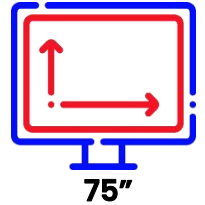




## MI-7 – No Camera 75" 4K TOUCH INTERACTIVE SMART

### Key Features

- **Stunning Visuals:** 4K Ultra HD (3840x2160p) display with 4mm physical tempered anti-riot glassto strengthen the visual effect and enhance the touch experience
- **All-in-one design:** The system integrates various features of different machines, including a built-in screen projection, electronic whiteboard, annotation, split screens, etc
- **Beautiful Layout:** The device has an aluminum alloy outer frame that is surface sandblasted and anodized. It also has an iron shell back cover and active heat dissipation.
- **Smooth Touching:** The device uses high-speed 20-point infrared touch technology, which provides a better writing experience, smoothness, and faster writing speed
- **BE HEARD:** The device has built-in 8 arrays microphones with echo cancellation and noise reduction technology, allowing for effective communication.
- **Dual System support:** The device has an international standard OPS slot, which allows for easy upgrading and maintenance.
- **Rich Expansion:** The device has abundant front expansion, which allows for convenient connectivity of all your devices.
- **PEACE OF MIND:** The device comes with an industry-leading 1-year standard warranty, with 24-hour professional after-sales services and technical team support.



# Product Description

---

The MI series interactive smart board is an innovative tool for modern classrooms. With its all-in-one design, 4K Ultra HD display, and smooth touch technology, it engages students and enhances the learning experience. Teachers can explain concepts, annotate diagrams, and share educational videos, making learning more immersive and interactive. Built-in microphones with noise reduction technology also allow for effective communication in large classrooms. The device's international standard OPS slot allows for easy maintenance, and its front expansion enables convenient connectivity with all devices.

The MI series interactive smart board is an essential tool for modern education, offering a range of features that improve student engagement and academic outcomes.

## Product Specifications

---

### Basic Parameter

<b>Screen Size</b>	75 inch
<b>Display Area</b>	1646*925.5
<b>Physical (mm)</b>	1708*1026.5*89
<b>Packaging (mm)</b>	1846*215*1180
<b>Net Weight (kg)</b>	54
<b>Gross Weight (kg)</b>	68.5

### LCD Panel

<b>Panel Brand</b>	BOE brand new gauge A screen (LG、CSOT、AUO Optional)
<b>Panel Technology</b>	Zero-Fit
<b>Panel Type</b>	TFT-LCD S-PVA
<b>Screen Ratio</b>	16: 9
<b>Brightness</b>	350cd/m <sup>2</sup> (Brightness can be customized)
<b>Ratio Contrast</b>	1200:1
<b>Visual Angle</b>	178°/178°
<b>Respond Time</b>	8ms
<b>Color Gamut (NTSC)</b>	72%
<b>Backlight</b>	WLED
<b>Life</b>	>60000H
<b>The Speaker</b>	2×8 Ω /8W(built in)
<b>Resolution</b>	3840 × 2160 (UHD) @60hz, 4K UHD screen

### Infrared Touch Characteristic

<b>Touch Type</b>	Infrared Touch frame
<b>Touch Point</b>	20 Touch Points
<b>Glass</b>	4mm tempered glass
<b>Touch Strength</b>	Zero pressure touch
<b>Respond Time</b>	<8ms

<b>Induction Life</b>	6 million times
<b>The Interface Definition</b>	USB 2.0(Full speed)
<b>The Light Resistance</b>	It has light resistance
<b>Positional Accuracy</b>	More than 90% of the touch area is 2mm
<b>Number of Infrared Induction Lines (W x D)</b>	32767 × 32767
<b>The Power Supply Model</b>	Full duplex usb-powered DC +5V up to 500mA
<b>Glass Transmittance</b>	> 88% (higher transmittance depends on glass surface treatment technology such as AR/AG)

### Motherboard / Android System

<b>Model</b>	CVTE-T982
<b>Processor</b>	T982-N0DN
<b>Input Port</b>	RJ45 IN, RJ45 OUT, PC AUDIO, LINE OUT, OPTICAL OUT, RS232, USB 2.0, HDMI *2, TOUCH OUT, USB 3.0*2
<b>Audio</b>	480i, 480p, 720p, 1080i, 1080p, 2160P
<b>System Version</b>	Android 7.0/ 8.0/ 9.0 version (Android 10 11 Optional)
<b>RAM</b>	3G RAM (1G/ 2G /4G /8G Optional)
<b>ROM</b>	32G ROM (8G / 16G/ 32G/ 64G Optional)

### Switching Power Supply

<b>Power Consumption (Typical Value)</b>	AC100-240V~(+/-10%),50/60Hz
<b>Stand By Power Consumption</b>	≤ 0.5W
<b>The Power Interface</b>	≤ 330W
<b>Switching Power Supply</b>	European standard 220V two - phase three - wire system

### The environment

<b>Working Temperature</b>	0℃~50℃
<b>Storage Temperature</b>	-20℃~60℃
<b>Working Humidity</b>	20%~80%(No condensation)
<b>Store Humidity</b>	10%~90%(No condensation)
<b>Display Mode</b>	S-ips, often black display, transmission
<b>Maximum Service Time</b>	24 hours

### OPS (Dual System)

<b>System Version</b>	Android 7/8/10/11 and other version for option
<b>Processor</b>	Intel core i3/i5/i7 option
<b>Graphic Board</b>	Core HD Graphics 3000
<b>Main Frequency</b>	2.4GHz
<b>Memory</b>	Memory 4G/8G/16G option
<b>Hard disc</b>	128G/256G/512G/1T option

# Product Customization

---

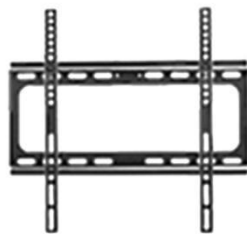


# Optional Content

---



AC Power Cord



Wall Bracket



Mobile Stand



PC Moduel (Dual System)

# Package Content

---



**Interactive Board**



**Instruction**



**Magnetic Touch Pen**



**Remote Controller**



**EPE/UPS**



**Crown Box**



**Wooden Box**



Contact **Sales**

**Devin He**

Phone: +86 18928337820

Whatsapp: +86 18928337820

Email: [Devin@giiking.com](mailto:Devin@giiking.com)

Latest News: [Giiking.shop](https://giiking.shop)

Official Website: [Giiking.com](https://giiking.com)

Alibaba: [Giiking.alibaba](https://giiking.alibaba.com)